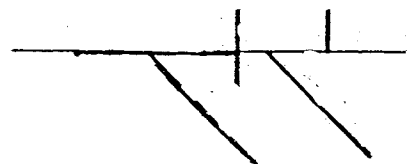
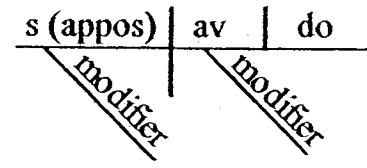
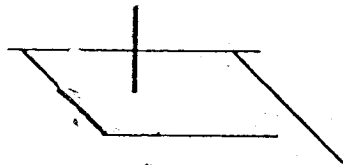
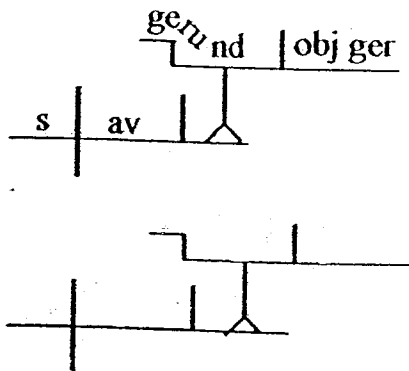
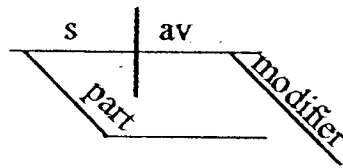
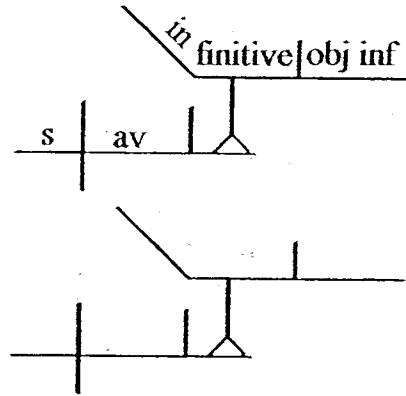
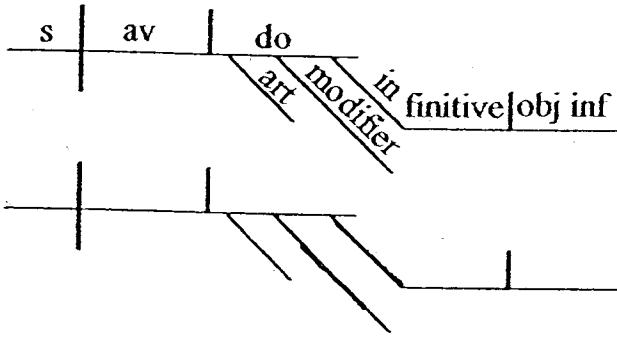
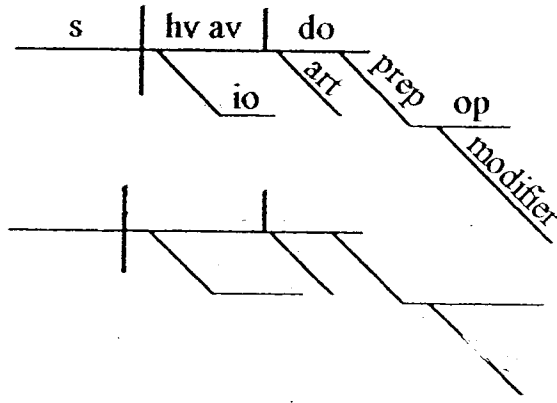
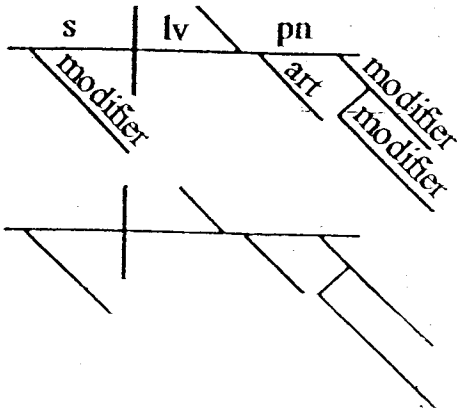
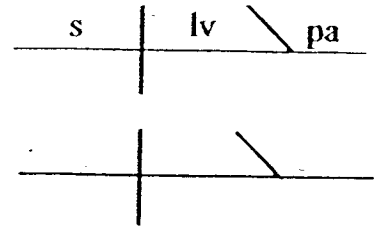
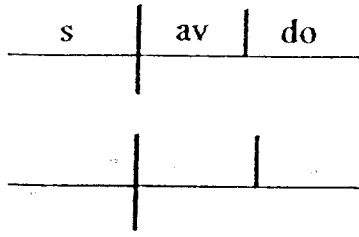
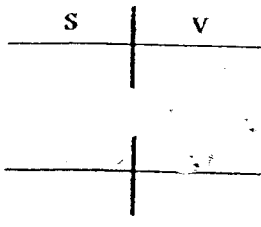
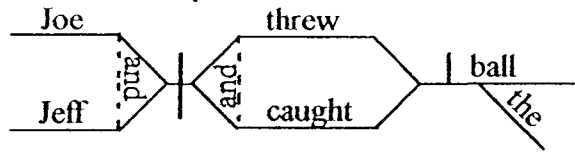
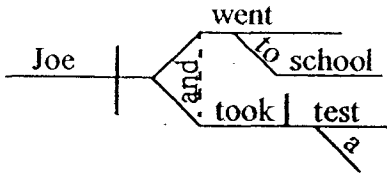
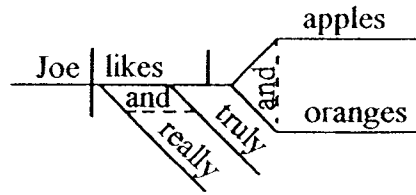
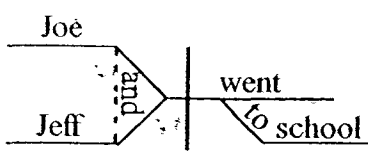


# Friday Notes DIAGRAMMING

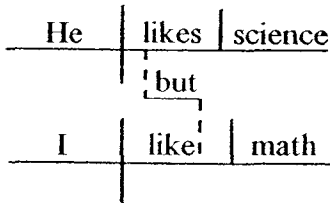


**compound parts**

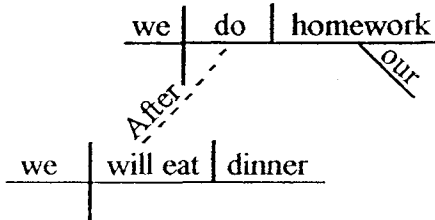
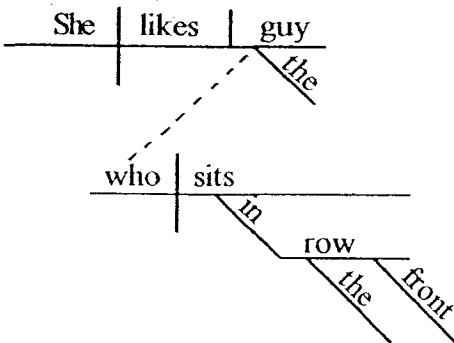


**clauses**

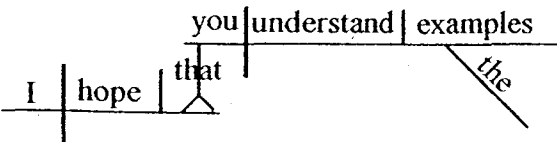
(connect independent clauses at verbs)



(connect adjective and adverb dependent clauses to what they describe)



(noun dependent clauses go on pedestals)



These basics will help you through most of your DGP sentences for the year. If you need more help, check a grammar book or the internet. One good website to check out is [webster.comnet.edu/grammar](http://webster.comnet.edu/grammar), but there are hundreds out there!